



# AATTC

Australian Association of  
Time Table Collectors Inc.

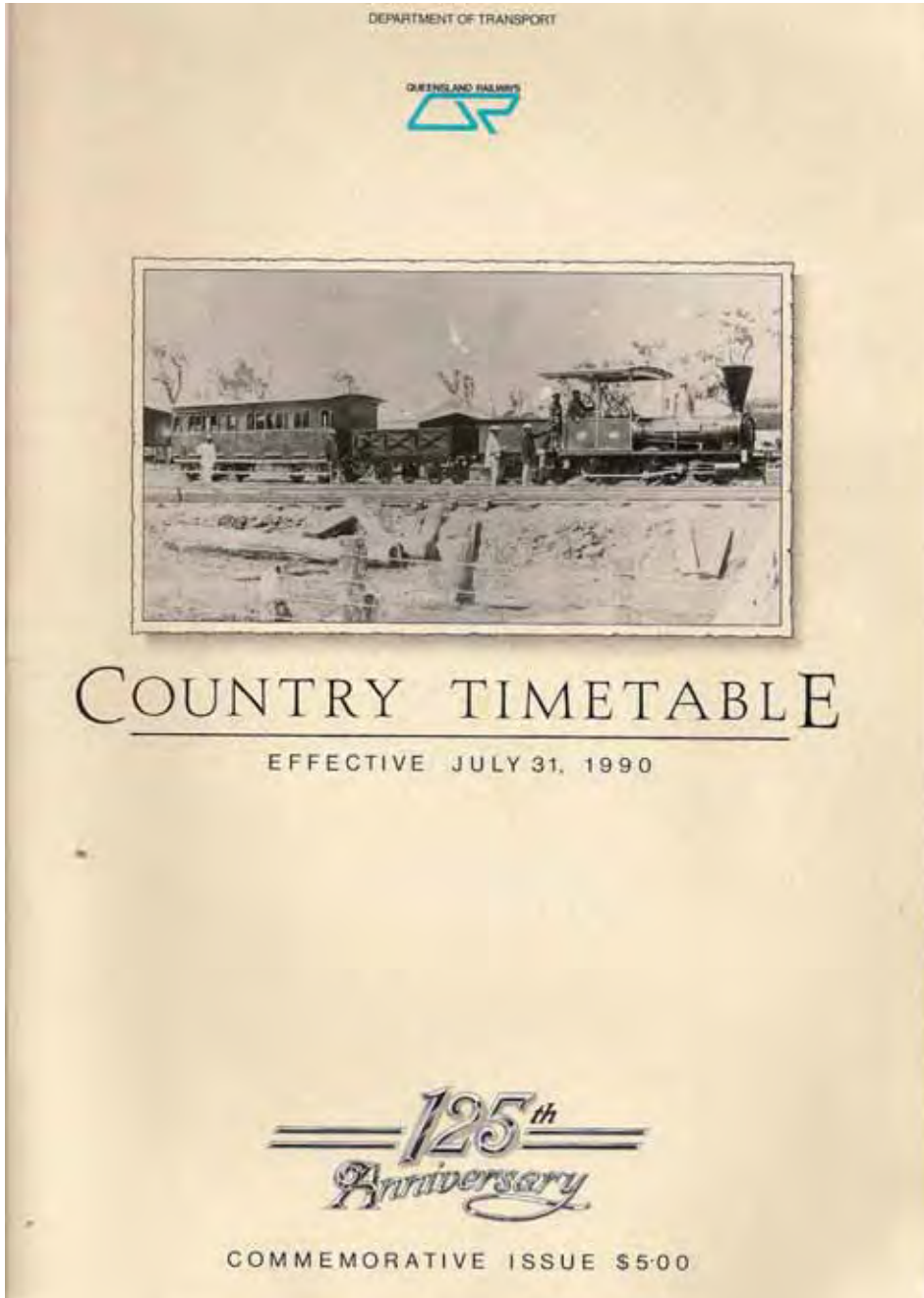
Inc. No. A0043673H

## TED DOWNS MEMORIAL AUCTION NO. 31

### AUCTION CATALOGUE

A Mail Auction of: TIMETABLES, MAPS AND OTHER ,RELATED TRANSPORT MATERIAL:  
RAIL TRAM, OMNIBUS & AIR; AUSTRALIA, N.Z., NORTH AMERICA & OTHER OVERSEAS.

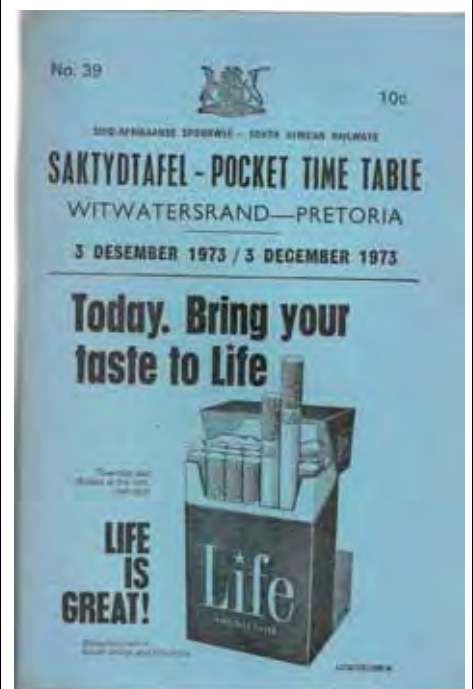
Bids close Friday 2<sup>nd</sup> October 2009



Lot 22



1848 Edition  
Lot 48



Lot 50

# Proceeds from This Auction Help the A.A.T.T.C. Record & Preserve Our Timetable History

## HERE'S HOW THIS AUCTION WORKS

(Bold type provides a summary of conditions; Light type gives further details)

### BIDDING:

- a. Bidding is open to anyone.
- b. **All bids will be regarded as genuine offers to buy.**
- c. Bids must be submitted in writing by email or post and must reach the Auctioneer no later than the closing date. A form is attached which can be used for postal bids.
- d. **Lots will be sold to the person bidding the highest amount, provided it meets any reserve price set by the vendor. Lots may well be sold at less than the highest bidder's actual bid, as explained in Conditions e & f below, i.e. the submitted bid is the maximum that the bidder is prepared to spend.**
- e. If the highest bid is 10% more than the second highest bid or any figure above that amount, the lot will be sold at only 10% more than the second highest bid. These amounts will be rounded in \$1 increments.
- f. If only one bid is received, the lot will be sold at the reserve price set by the vendor.
- g. An estimate of the value of the lot is included with descriptions but this is a guide only. Bids that are higher or lower than the range suggested will be accepted. However, keep in mind that the reserve price may only be a little less than the lower estimate figure.
- h. Bidding will be in dollar increments (eg: \$12.00 or \$13.00, but not \$12.50).
- i. If two or more identical, highest bids are received, the lot will be sold to the bidder who is deemed to have posted his/her bid first.
- j. Those on a specific budget may (if they wish) nominate a limit on how much they wish to spend. If you want to use this service, please list your bids in your desired order of purchase preference along with your bid for each lot. The auctioneer will count your bids only until your nominated monetary limit has been reached.
- k. If there are identical lots listed in the catalogue, a bid on one of these lots is all that is needed, eg. If there are three identical lots listed, the three highest bidders on any of the lots will receive the three lots.
- l. If there are similar but different lots offered (eg. A 1932 Q.R. Public T.T. and a 1934 Q.R. Public, or a 1932 Q.R. Public in good condition and a 1932 Q.R. Public in poor condition) you may, if you wish, make your primary bid on one of the lots and make an alternative bid on the other. The alternative bid will only be counted if the primary bid is unsuccessful. More than one alternative bid may be accepted (eg. If there is a 1932 Q.R. Public, a 1933 Q.R. Public, a 1934 Q.R. Public & 1936 Q.R. Public).

### VIEWING:

- m. If you are in Melbourne, arrangements can be made to view lots at a mutually convenient time – phone (03)9540 0320 or email [swar3841@bigpond.net.au](mailto:swar3841@bigpond.net.au) to arrange this service. To assist those not in Melbourne, for a fee of \$2.50 per item or 5 x 50c stamps, photocopies of up to five typical pages, including the cover, may be posted to prospective bidders. A limit of up to five lots will usually apply to this service. Please use the above phone number or email address to arrange this. These arrangements are subject to there being time to arrange viewing prior to the closing date for bids.

### PAYMENT:

- n. All bidders will be advised of their success or otherwise and invoiced. The cost of postage and packing will be included on the invoice.
- o. **All payments must be by cheque, money order or most credit cards (PayPal) and must be made within 14 days of the invoice date. All payments must be in Australian dollars.**
- p. To pay by PayPal, go to [www.paypal.com.au](http://www.paypal.com.au), create your account (if new) or log on to your existing account. Enter your payment details; include your name and "AATTC Auction". The e-mail address for making the payment is [tp@hunterlink.net.au](mailto:tp@hunterlink.net.au).
- q. No lots will be forwarded until payment has been received and (if applicable) cheques have been cleared.
- r. No lot may be returned unless incorrectly described in the catalogue and no lot may be returned if it has been repaired, attempted to have been repaired or subjected to any test, after receipt by the successful bidder.

### SELLING THROUGH THE AUCTION:

- s. Preference will be given to the sale of lots from A.A.T.T.C. members but others may submit material.
- t. **Please notify the Auctioneer before submitting material.**
- u. **A 20% commission applies to lots sold through the A.A.T.T.C.** The balance of 80% of the price realised will be forwarded to the vendor (i.e. those submitting material).
- v. Payment will be forwarded to the vendor as soon as the A.A.T.T.C. has received all outstanding monies from successful bidders on the specific vendor's lots.
- w. Vendors must nominate a reserve price for any lot. This will not be published. The Auctioneer can assist you and will advise you if your reserve(s) appear to be too high. If there are no bids of or above the reserve, the lot will be passed in.
- x. After an auction there may be some post Auction selling. Following any post auction sales, unsold lots will be either returned to the vendor or retained for resubmission in a future auction. The auctioneer will consult vendors on this matter.

### POST AUCTION SELLING:

- y. Post auction selling of any unsold lots to bidders in the Auction will occur. If you wish to participate in this please advise your email address on your bid form and the Auctioneer will send you a list of unsold items and their minimum price. You will need to respond with your offer price by email to the Auctioneer within 3 days. Any item will be sold to the respondent with the highest offer and will need to be paid for within 3 days. Following this, the procedure in Condition x [above] will be followed.

### CONFIDENTIALITY:

- z. To the best of the A.A.T.T.C.'s ability, the confidentiality of all parties involved in the auction will be protected.

## TED DOWNS MEMORIAL AUCTION NO. 31

Category	Lot	Description	Est.
CR - RAIL - PTT	1	CR PTT Trans Australian Railway Route Desc. & Guide, eff 28-Mar-1918 (reprint), 12pp folded, EC.	\$5-10
PTT - NSW - RAIL	2	NSWGR, Country PTT, eff 5-May-68, 96pp (incl. f-out map), VGC.	\$15-25
PTT - NSW - RAIL	3	PTCNSWRD, Suburban PTT, eff 7-May-78, 110pp, VGC.	\$7-12
PTT - NSW - RAIL	4	NSWGR Country PTT, eff 28-May-72, 88pp (incl. map), VGC	\$10-20
PTT - NSW - RAIL	5	NSWR PTT: - Suburban PTT, eff 5-May-68 (Rev 14-Sep-69), 112pp (incl. schematic map), VGC. - Country PTT, eff 5-May-68 (Rev 22-Jun-69), 96pp (incl. map), VGC.	\$15-25
PTT - NSW - RAIL	6	DORNSW Country PTT, eff 22-Jan-56, 144pp, loose p & map=FC.	\$20-35
PTT - NSW - RAIL	7	NSWR PTT: - Suburban PTT, eff 5-May-68, 112pp (incl. schematic map), VGC. - Country PTT, eff 5-May-68, 96pp (incl. map), VGC.	\$20-35
PTT - NSW - RAIL	8	NSWR PTT: - Suburban PTT, eff 17-Oct-65, 112pp (incl. schematic map), VGC. - Country PTT, eff 1-May-67, 96pp (incl. map), VGC.	\$15-25
PTT - VICTORIA - RAIL	9	VR Train Times, Country & Interstate, Summer 1969-70, 98pp (incl. f/out map), damaged cvr.=GC.	\$10-25
PTT - VICTORIA - RAIL	10	VR Train Times, Country & Interstate PTT, Summer Issue, 1971-72, 98pp, (incl. map), VGC.	\$10-20
PTT - VICTORIA - RAIL	11	VR Train Times, Country & Interstate PTT, Winter Issue, 1972, 98pp, (incl. map), VGC.	\$10-20
PTT - VICTORIA - RAIL	12	VR Train Times, Country & Interstate PTT, Summer Issue, 1974, 98pp, (incl. map), VGC.	\$10-20
PTT - VICTORIA - RAIL	13	VR Train Times, Country & Interstate PTT, Winter Issue, 1975, 98pp, (incl. map), VGC.	\$10-20
PTT - VICTORIA - RAIL	14	VR Train Times, Country & Interstate PTT, Summer Issue, 1976, 98pp, (incl. map), VGC.	\$10-20
PTT - VICTORIA - RAIL	15	VR Train Times, Country & Interstate PTT, Winter Issue, 1977, 98pp, (incl. map), VGC.	\$10-20
PTT - VICTORIA - RAIL	16	VR Train Times, Country & Interstate PTT, Summer Issue, 1978, 98pp, (incl. map), VGC.	\$7-12
PTT - VICTORIA - RAIL	17	VR Train Times, Country & Interstate PTT, Issue, 7-Nov-60 to 30-Apr-61, 98pp, (incl. map), VGC.	\$12-30
PTT - BRISBANE - RAIL	18	QR PTT Suburban eff 8-Nov-70 (Rev 9-May-71), 145pp, GC.	\$10-20
PTT - QUEENSLAND - RAIL	19	QR PTT, Country Services, eff Mar-80, 160pp (incl. map), EC.	\$7-12
PTT - QUEENSLAND - RAIL	20	QR Suburban PTT, eff 17-Nov-79, 192pp, Commemorative version for commencement of 1st Stage of electrification (Ferny Grove to Darra), VGC.	\$10-20
PTT - QUEENSLAND - RAIL	21	QR Country PTT, eff 23-Jun-68, 253pp (incl. map), VGC.	\$15-30
PTT - QUEENSLAND - RAIL	22	QR 125th Anniversary PTT, Eff 31-Jul-90, 60pp, full colour, magazine style, EC.	\$25-40
PTT - QUEENSLAND - RAIL	23	QR Suburban PTT, eff 23-Jun-68, 64pp, VGC	\$15-30
PTT - QUEENSLAND - RAIL	24	QR Suburban PTT, eff 1-Nov-71, 62pp, VGC	\$10-20
PTT - QUEENSLAND - RAIL	25	QR Country PTT, eff 25-Jun-67, 120pp, VGC	\$10-20
PTT - QUEENSLAND - RAIL	26	QR SUBURBAN PTT, 30-4-1988, 232pp, FOM. WORLD EXPO 88 ADDITIONAL services. Some moth-eating on cvr. = FC.	\$7-12
PTT - QUEENSLAND - RAIL	27	QR Pinkenba Line PTT, 11-1984, 8pp folds down to 107x90mm. EC.	\$1-3
PTT - QUEENSLAND - RAIL	28	QR SUBURBAN Special PTT issued for rebuilding of tunnels - for lines dated: * Caboolture 21/8/77 * Petrie 29/10/77 * Ipswich 21/8/77 (stamped amendment eff 10/9/77 * Ferny Grove 21/8/77 (stamped amendment eff 10/9/77)	\$5-10
PTT - QUEENSLAND - RAIL	29	QR Supplement to WTT, Subn Servs, eff 20-May-70, 128pp, VGC.	\$5-10
PTT - SOUTH AUSTRALIA - RAIL	30	SAR PTT Metro & Country PTT, eff 16-Dec-68, 112pp (incl. maps), VGC.	\$10-25
PTT - SOUTH AUSTRALIA - RAIL	31	SAR PTT Metro & Country PTT, eff 2-May-65, 96pp (incl. maps), VGC.	\$15-30
PTT - SOUTH AUSTRALIA - RAIL	32	SAR PTT Metro & Country PTT, eff 4-May-71, 104pp (incl. maps), VGC.	\$10-25
PTT - WESTERN AUSTRALIA - RAIL	33	WA Road & Rail, 1968-69 Ed, 80pp, VGC.	\$15-30
PTT - WESTERN AUSTRALIA - RAIL	34	WAGR PTT, Rail & Road Bus Pass Serv, 1965-66 ed., 50pp, VGC.	\$15-30
PTT - WESTERN AUSTRALIA - RAIL	35	WAGR PTT, Rail & Road Bus Pass Serv, eff Jan-1970, 120pp, VGC.	\$10-25
PTT - WESTERN AUSTRALIA - RAIL	36	MTT (Perth) Train PTT - TT's for Fremantle, Midland & Armadale eff 11-Aug-85, EC Transperth PTT for Fremantle, Midland & Armadale eff 24-Apr-88, EC Transperth PTT for Joondalup line prior to opening of Currabine eff Mar-1993, EC	\$5-8
PTT - WESTERN AUSTRALIA - RAIL	37	Transperth Train PTT (America's Cup) - F1 (Fremantle) eff 5-Oct-86 - A1 Armadale eff 1-Nov-86 - "The spinnaker run" special PTT for Fremantle to South Beach shuttle (1-Nov - 31-Dec-1986)	\$5-8
PTT - TASMANIA - RAIL	38	Tasmanian Travel Bureau, Principal Rail & Motor Services in Tasmania, Fares & Timetables, eff Dec-50 to Feb-51, printed brochure, folded to 4pp, GC.	\$12-20

Category	Lot	Description	Est.
PTT - NZ - RAIL	39	NZR PTT, Christchurch Suburban RAIL Services, Eff 14-Aug-63, 1pp leaflet folded, VGC.	\$20-35
PTT - NEW ZEALAND - RAIL	40	NZR System PTT, eff 1-Dec-70, 126pp (incl. various maps), VGC.	\$25-40
PTT - NEW ZEALAND - RAIL	41	NZR Dunedin suburban Rail PTT eff 21-Jul-69, 4pp, VGC.	\$25-40
PTT - NZ - RAIL	42	NZR Wellington Suburban TT, eff 3-Nov-75, 26pp (incl. schematic map), VGC.	\$15-30
PTT - UK - RAIL	43	Southern Railway PTT, extn of electrification to Reading, 26-Sept-1938, 556pp, inside cvr. map, EC.	\$20-40
PTT - UK - RAIL	44	BR, London Sbn: Liverpool St/Fenchurch St, 1-5-1972, 176pp, FOM. GC.	\$5-10
PTT - UK - RAIL	45	Bradshaw's Guide (UK) 17-Sep to 4-Nov 1956, 1184pp, Damaged & loose cvrs, VGC.	\$10-50
PTT - UK - RAIL	46	Isle of Man Railways - PTT Eff: 1-July-1901, 85x125mm, 4pp, folded, some wear, foxing, VGC. MANX Electric Railway, 1st electrified railway, Eff 24 May 1975, 6pp folded 95x100mm. VGC.	\$10-50
PTT - UK - RAIL	47	South West RAILS, RAIL Times PTT, eff 28-May to 23-Sep-2000, 320pp, VGC.	\$5-15
PTT - UK - RAIL	48	Bradshaw's Railway Companion, 1846 ed., 74pp, Damaged & loose cvrs, worn & loose pages = GC.	\$125-250
PTT - NORTHERN IRELAND - RAIL	49	Northern Ireland Railways, System TT, Eff 28-Nov-94, 58pp (incl. maps), EC.	\$5-15
PTT - SOUTH AFRICA - RAIL	50	South African Railways, Witwatersrand - Pretoria Region PTT, eff 3-Dec-73, 248pp, VGC.	\$10-25
PTT - SOUTH AFRICA - RAIL	51	South African Railways, Cape Western System PTT, eff 6-Dec-71, 216pp, VGC.	\$10-25
PTT - SOUTH AFRICA - RAIL	52	South African Railways, Natal System PTT, eff Dec-71, 140pp, VGC.	\$10-25
PTT - USA - RAIL	53	SP PTT, eff Aug-6-1944, (incl. map), 55pp, GC.	\$15-30
PTT - USA - RAIL	54	UP PTT, eff Mar-1-1939, 64pp (incl. map), GC.	\$15-30
PTT - USA - RAIL	55	Pensy RR PTT, eff Nov-26-1944, 36pp, GC	\$15-30
PTT - USA - RAIL	56	Pensy RR PTT, eff Jun-4-1934, 90pp, VGC.	\$15-30
PTT - USA - RAIL	57	Pensy RR PTT, eff Jul-29-1962, 14pp, VGC.	\$15-30
PTT - USA - RAIL	58	Seaboard Railroad, Condensed PTT, Eff Apr-29-1962, 20pp, VGC.	\$15-30
PTT - USA - RAIL	59	D&RGWR PTT, eff Dec-44. 30pp, VGC.	\$15-30
PTT - USA - RAIL	60	AT&S RS PTT, eff July-11-37, 65pp, VGC.	\$15-30
PTT - USA - RAIL	61	UP PTT, eff Mar-1-1939, 48pp (incl. map), GC.	\$15-30
PTT - USA - RAIL	62	NYNH&HR PTT, Maine, New Hampshire & Vermont, eff Oct-22-1944, 8pp, GC.	\$15-30
PTT - USA - RAIL	63	SooLine PTT, Eff Oct-8-1944, 27pp, some Loose & Damaged Pages=FC.	\$15-30
PTT - USA - RAIL	64	B&OR PTT, Eff Sep-27-1936, 102pp, VGC.	\$15-30
PTT - USA - RAIL	65	South Shore & South Bend Line PTT, Eff Apr-24-1955, 10pp, folded, some rips & tears = GC.	\$7-15
PTT - USA - RAIL	66	SANTA FE Streamliner Service, "The Chicagoan" & "The Kansas Cityan", eff Jan-30-1939, 4pp (folded), VGC.	\$7-15
PTT - USA - RAIL	67	PACIFIC ELECTRIC Rail Service PTT, Los Angeles Area, eff Feb-20-1945, 4pp, folded, VGC.	\$7-15
PTT - USA - RAIL	68	SP: Your Shasta Daylight Trip, Portland to San Francisco. Strip map and Timetable for the journey, eff Sep-25-1960, folded booklet, GC.	\$7-15
PTT - USA - RAIL	69	C&NWL PTT eff Jun-21-1936, 60pp, VGC.	\$15-30
PTT - USA - RAIL	70	CMS&P PTT, Northern Wisconsin and Upper Michigan Route, 28-Jul-44, 4pp folded, VGC.	\$15-30
PTT - USA - RAIL	71	Alton Railroad, 1-10-1942, 32pp. VGC.	\$15-30
PTT - USA - RAIL	72	CMS&P (Milwaukee Road) 30-7-1944, 44 pp. VGC.	\$15-30
PTT - USA - RAIL	73	Northern Pacific, 8-12-1935, 32pp. EC.	\$15-30
PTT - USA - RAIL	74	NP, 6-3-1938, 36pp. C but still VGC.	\$15-30
PTT - USA - RAIL	75	NP, 25-6-1944, 36pp. Cvr. = PC; rest = VGC.	\$15-30
PTT - USA - RAIL	76	RI, 13-2-1938, 36pp. EC.	\$15-30
WTT - NEW SOUTH WALES - RAIL	77	DORNSW WTT Loads for trains & Goods Services, Metro Lines, Eff 5-May-68, 145pp, GC.	\$15-30
WTT - NEW SOUTH WALES - RAIL	78	SRA NSW WTT, Metro WTT, Book 2 (Sat & Sun) eff 31-May-87, 545pp, GC.	\$7-15
WTT - NEW SOUTH WALES - RAIL	79	SRA NSW WTT, Country & Freight Pass Servs, Paralympic Games, 19 - 29 Oct-2000, 62pp, VGC.	\$2-5
WTT - NEW SOUTH WALES - RAIL	80	DOR-NSW, WTT Western Division, Eff 21-Jun-64, 210pp, some damage to cvr.=GC	\$20-35
WTT - NEW SOUTH WALES - RAIL	81	RailCorp WTT Sydney Suburban Eff 5-Sep-2005, Book 1: Monday to Friday, 383pp & Book 2: Weekends & PH's, 249pp, both in PVC Binders, MC.	\$2-5
WTT - NEW SOUTH WALES - RAIL	82	PTC-NSW WTT, Northern Region, Eff 18-Sep-76, 360pp, Well used, worn pp = GC.	\$15-25
WTT - NEW SOUTH WALES - RAIL	83	PTC-NSW WTT, Local Appendix to WTT (Metropolitan Div), eff 1-Jul-75, 501pp, VGC.	\$15-25
WTT - NEW SOUTH WALES - RAIL	84	DORNSW WTT Northern Division, eff 5-May-68, 410pp, VGC.	\$20-35
WTT - NEW SOUTH WALES - RAIL	85	DOR NSW WTT Southern Division, eff 21-Jun-64, 290pp, GC	\$20-35
WTT - NEW SOUTH WALES - RAIL	86	DOR NSW WTT Illawarra Division, eff 25-Nov-51, 120pp, Damages Cvrs, GC.	\$25-40
WTT - NEW SOUTH WALES - RAIL	87	DORNSW WTT Sydney Metro Division Goods, eff 7-Oct-65, 150pp, VGC	\$20-35
WTT - NEW SOUTH WALES - RAIL	88	DORNSW Christmas & New Year Holiday WTT: - Illawarra, Western, Southern Regions for 1965-1966 holiday period, 60pp, VGC. - Illawarra, Western, Southern, Northern Regions for 1966-1967 holiday period, 60pp, GC.	\$20-35
WTT - VICTORIA - RAIL	89	VR Train Services, Country Lines, Easter Hol. Servs Period 1966, 204pp, GC.	\$10-20
WTT - VICTORIA - RAIL	90	VR WTT - Eastern Dist eff 5/5/69 123pp EC	\$10-20

Category	Lot	Description	Est.
WTT - VICTORIA - RAIL	91	VR Northern & Midland Districts WTT eff 24-Jul-80, 144pp, VGC	\$7-12
WTT - VICTORIA - RAIL	92	VR Northern & Midland Districts WTT eff 3-Nov-69, 153pp, VGC	\$10-20
WTT - VICTORIA - RAIL	93	VR WTT's: - Metropolitan WTT, Pt 2 (Saturdays & Sundays) eff Feb-77, 380pp, VGC. - WTT Addenda (General Instructions), eff 28-Jun-71, 100pp, VGC. - WTT Western & Sth Western Dist., compiled & incomplete (pp45-94 missing), replacement cover, water damaged pages=FC.	\$10-20
WTT - VICTORIA - RAIL	94	VR WTT North Eastern District, eff 25-Nov-73, 225pp, VGC.	\$10-20
WTT - VICTORIA - RAIL	95	VR WTT Eastern District, eff 1-May-67, 120pp, VGC.	\$10-20
WTT - VICTORIA - RAIL	96	Victorian WTT's & Instructions: - STA (V/LINE) WTT, Northern Region, eff 3-Aug-86. - VR WTT, Eastern Region, eff 31-Oct-82, 74pp, VGC. - VR WTT Addenda (General Instructions) eff 16-May-83, 52pp, VGC. - STA (Vic) V/Line WTT, North-Eastern Region, replacement pp, eff 1985, 72pp, VGC.	\$10-20
WTT - VICTORIA - RAIL	97	VR, Directory of Stations, eff Jun-83, 68pp, VGC.	\$7-12
WTT - VICTORIA - RAIL	98	VR WTT, Eastern Region, Eff 28-Jul-75, 138pp, VGC.	\$10-20
WTT - QUEENSLAND - RAIL	99	QR WTT Northern Div (incl. Great Northern, Cairns, Normanton Railways and Innisfail Tramway), eff 1-Jun-65, 124pp, VGC.	\$10-20
WTT - QUEENSLAND - RAIL	100	QR City RAIL WTT, eff 18-Jan-95, 240pp, VGC.	\$7-12
WTT - SOUTH AUSTRALIA - RAIL	101	ANR Central Region WTT, eff: 24-Jun-79, 224pp, Some pages torn/repared, some loose pages, document is complete, GC.	\$15-35
WTT - SOUTH AUSTRALIA - RAIL	102	SAR WTT Port Lincoln Div, eff 10-Jul-77, 20pp, VGC.	\$15-35
WTT - SOUTH AUSTRALIA - RAIL	103	SAR WTT Peterborough Div, eff 1-Jul-73, 28pp, VGC.	\$15-35
WTT - SOUTH AUSTRALIA - RAIL	104	SAR WTT Murray Bridge Div, eff 1-Jul-73, 100pp, VGC.	\$15-35
WTT - SOUTH AUSTRALIA - RAIL	105	SAR WTT Adelaide Div PH services Easter 1976, 214pp, VGC.	\$7-12
WTT - SOUTH AUSTRALIA - RAIL	106	SAR WTT Adelaide Div PH services Christmas, New Year & Australia Day PH 1972-73, 214pp, VGC.	\$7-12
WTT - SOUTH AUSTRALIA - RAIL	107	SAR WTT Adelaide Div PH services Easter & ANZAC Day, Adelaide Cup Day & Queens Birthday PH 1972-73, 214pp, VGC.	\$7-12
WTT - SOUTH AUSTRALIA - RAIL	108	SA-STA-RD WTT for Public Holidays: - WTT PH Adelaide Div 1976-77, 124pp, VGC. - WTT Metropolitan Rail Services, 1977-78, 92pp, VGC.	\$7-12
WTT - WESTERN AUSTRALIA - RAIL	109	Westrail WTT SG Train Services (book 4) Train Servs & General Instructions eff 11-Feb-80, 56pp, VGC. Also incl. WTT Supplement amendments eff 24-May-82, 85pp, some pen amendments, GC.	\$10-20
WTT - WESTERN AUSTRALIA - RAIL	110	WAGR WTT Gen Inst (Book 1), Eff 27-Jun-65, 48pp, GC. WAGR WTT Eastern Goldfields Railway, Pass & Goods Servs (book 4) eff 14-Jun-64, 28pp, GC.	\$25-40
WTT - WESTERN AUSTRALIA - RAIL	111	WA Country WTT - Eastern & Eastern Goldfields Railway, Pass & Goods Serv eff 20-Feb-72, 56pp & amendments, GC	\$7-12
WTT - WESTERN AUSTRALIA - RAIL	112	Westrail WTT SG Train Services (book 4) Train Servs & General Instructions eff 8-Jan-78, 90pp, VGC.	\$7-12
WTT - WESTERN AUSTRALIA - RAIL	113	WAGR Freight and Wagon handbook 10/70 print 48pp incl. freight & depot details GC (loose covers)	\$7-12
WTT - WESTERN AUSTRALIA - RAIL	114	WAGR Freight and Wagon handbook 10/73 print 48pp incl. freight & depot details GC (loose covers)	\$7-12
WTT - WESTERN AUSTRALIA - RAIL	115	WAGR Diesel Loco and Railcar operating instructions - amendments pertaining to Metric system of weights and measurement 72pp 5/74 print VGC	\$7-12
WTT - WESTERN AUSTRALIA - RAIL	116	WAGR WTT - Great Southern Railway eff 12/7/1964 24pp EC	\$10-25
WTT - WESTERN AUSTRALIA - RAIL	117	WAGR, WTT BOOK No.1 GENERAL INSTR., 10-1-1971, 106pp. R on cvr. where metal binder-clip has been removed, but GC.	\$10-25
WTT - WESTERN AUSTRALIA - RAIL	118	WAGR, WTT BOOK No.1 GENERAL INSTR., 17-2-1974, 102pp. A little writing on cvr. & minor S = GC.	\$10-25
WTT - UK - RAIL	119	BR Eastern Region, WTT Freight RAILS between London, Whitmore, Norwich and Branches, eff 1-Aug-66 to 5-Mar-67, 44pp, VGC.	\$7-12
ETT - USA - RAIL	120	UP ETT System TT No. 9 eff 25-Oct-92, 145pp, EC.	\$7-12
GE NERAL - NSW - RAIL	121	NSWGR, "Practical Questions for Engine-drivers & Firemen", 31-Mar-1911, 44pp, VGC.	\$40-75
GE NERAL - NSW - RAIL	122	PTC NSW Training Centre - working papers covering various aspects of training for staff - 15 papers of a 41 part series - appear to date from 70's VGC	\$10-25
GE NERAL - NSW - RAIL	123	DR,NSW, Mechanical Br. GENERAL WORK-ING INSTRUCTIONS RELATING TO DIESEL ELECTRIC LOCOMOTIVES, 1953, in sections for various locos, about 170 duplicated pp, a few illust. PC.	\$10-25
GE NERAL - NSW - RAIL	124	DR,NSW, Mechanical Br., ditto, 4-1958 revised 4-1960. Some C on cvr. but GC.	\$10-25
GE NERAL - NSW - RAIL	125	DR,NSW, Engine Loads General Instr., 27-9-1936, 42 single-sided pp. Cvr S but GC.	\$10-25

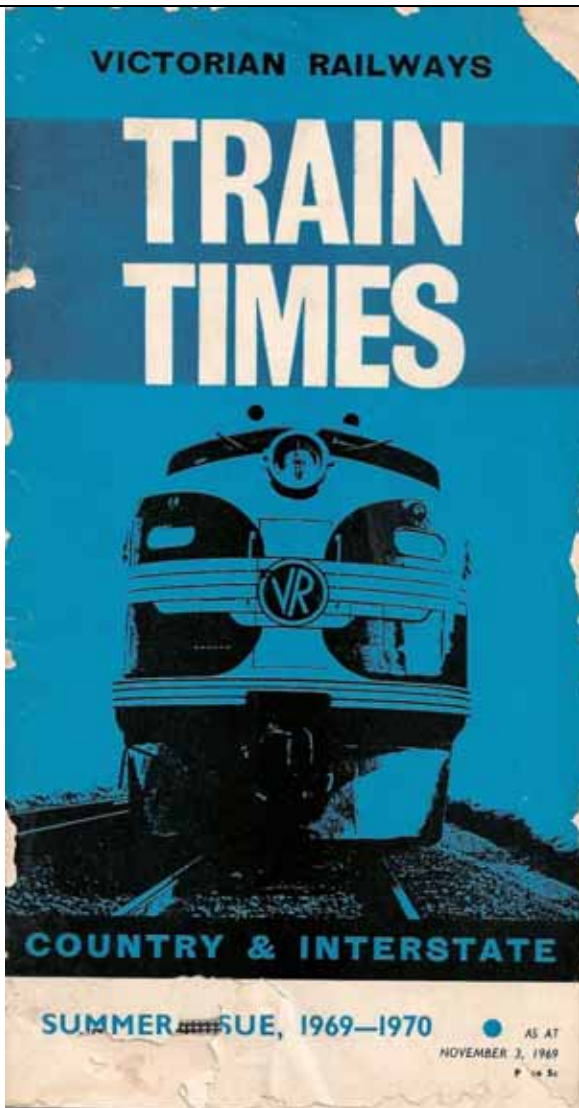
Category	Lot	Description	Est.
GENERAL - NSW - RAIL	126	DR,NSW, Mechanical Br. MANUAL FOR MULTIPLE UNIT DIESELS COMPRISING NORTHERN TABLELANDS – CANBERRA MONARO, & FAR WEST EXPRESS TRAINS WITH G.M. 62808 ENGINES & R.C.3. TRANS-MISSION, 4-6-1964, 77 single-sided duplic. pp, no illust'ns. FC.	\$10-25
GENERAL - VICTORIA - RAIL	127	VR Rules for the automatic system of Rail Signalling on Single Lines, STN C4/64, 16pp, GC.	\$10-25
GENERAL - VICTORIA - RAIL	128	VR RULES & REGULATIONS, 1919 edition – 126 print, hard cover, 478pp. GC.	\$50-75
GENERAL - VICTORIA - RAIL	129	V/Line Driver Training Project - Definitive milestone report Jan 1988 52pp EC2	\$5-15
GENERAL - TASMANIA - RAIL	130	Emu Bay Railway, Locomotive Handbook, 70pp, VGC.	\$5-15
GENERAL - TASMANIA - RAIL	131	TGR Fares Guide brochure - Nov 71 - folded to form 3pp brochure	\$1-3
GENERAL - NZ - RAIL	132	New Zealand's Long-Distance Passenger RAILS, Rangitikei Rail Fans Group, 1984 ed., 30pp (plus some amendment sheets), VGC.	\$5-15
GENERAL - UK - RAIL	133	BR Working Instructions for AC Electrified Lines, eff 1-Dec-86, 52pp, PVC B, VGC.	\$5-15
GENERAL - UK - RAIL	134	Region, Sect App to WTT & books of rules & regs.,Aug-97, app 50pp, PVC B, VGC.	\$5-15
GENERAL - UK - RAIL	135	BR Railtrack South, Sectional Appendix, including track diagrams & instructions, Apr-96, approx 250+pp, PVC B, VGC.	\$5-15
GENERAL - UK - RAIL	136	BR Driver Railing Workbook, Safety on the move, 1992ed, 86pp, VGC.	\$5-15
GENERAL - UK - RAIL	137	BR RAIL Crew Manual, Drivers Braking Instructions, Issue 4, 1982, 30pp. VGC.	\$5-15
GENERAL - UK - RAIL	138	London, Midland & Scottish Railway, Book of instructions, Working of Electric RAILS Lines, Central Electric Lines, 45pp & amendments, 1937ed, EC.	\$5-15
GENERAL - UK - RAIL	139	BR Diver Railing Manuals, modules: - S3: RAIL Warning Systems, eff 6-Dec-03,17pp, VGC. - TW1: Preparation & movement of RAILS, eff 6-Dec-03, 88pp, VGC. - TW3: Preparation & Movement of loco-hauled RAILS, eff 6-Dec-03, 64pp, VGC.	\$5-15
GENERAL - UK - RAIL	140	London Underground, Regulations concerning working of RAILS, 1984 ed., VGC.	\$7-15
GENERAL - UK - RAIL	141	BR Southern, Electrified Lines, Working of RAILS, Sept-76, 66pp EC	\$7-15
GENERAL - UK - RAIL	142	BR Rule Book, updated to 7-Feb-95, 100+pp, VGC.	\$7-15
GENERAL - IRELAND - RAIL	143	EIREANN, Weekly Circular, WE 26-Jun-83, 44pp, GC.	\$7-15
GENERAL - FRANCE - RAIL	144	Paris Orleans MIDI Railways of France, The Pyrenees Regional Guide, undated (possibly 1950's print), 32pp, GC.	\$7-15
GENERAL - SOUTH AFRICA - RAIL	145	South African Railways, Airways & Harbours, A guide to the Kruger National Park, 1956, 64pp, VGC.	\$7-15
PTT - SYDNEY - TRAM	146	DORT&T Tram PTT, Railway & Circular Quay, Nth Bondi, Bronte, North Bondi via Bellevue Hill, Waverley Depot, Bondi Junct, Coogee Lines, eff 3-Sept-49, VGC,	\$25-40
PTT - SYDNEY - TRAM	147	DORT&T Tram PTT, North Sydney Lines, eff 1-Sep-49, 36pp, VGC.	\$25-40
PTT - SYDNEY - TRAM	148	DORT&T Tram PTT, Western Suburban Lines, eff 26-Apr-49, 40pp, VGC.	\$25-40
PTT - SYDNEY - TRAM	149	DORT&T Tram & Trolley Bus PTT, Watson's Bay Tramway & Wylde St Trolley Bus, eff 3-Jun-44 (reprint 2-Feb-48), 12pp, VGC.	\$25-40
PTT - SYDNEY - TRAM	150	DOGT-NSW, Tram PTT, Hunter St City/Railway Square - Maroubra Bay & La Perouse Lines, Eff 23-Oct-60, 36pp, VGC.	\$20-35
PTT - SYDNEY - TRAM	151	DOGT, Tram PTT: NSW - Queens Square - Watsons Bay Line, Eff 2-Feb-59, 12pp, VGC.	\$20-35
PTT - SYDNEY - TRAM	152	DOGT, NSW - Trolley Bus PTT - Rockdale - Kogarah -Sans Souci and Dolls Point, Eff 14-Sep-49, 16pp, VGC.	\$25-40
PTT - SYDNEY - TRAM	153	DOGT, NSW - Trolley Bus PTT - Rockdale - Kogarah -Sans Souci and Dolls Point, Eff 23-Feb-52, 12pp, VGC.	\$20-35
PTT - SYDNEY - TRAM	154	DOGT, NSW - Tram PTT - Watsons Bay Line, Eff 2-Feb-59, 12pp, VGC.	\$20-35
PTT - MELBOURNE - TRAM	155	MMTTB Melbourne Tram Map & Summary TT, eff May-56, VGC	\$20-35
PTT - BRISBANE - BUS	156	DoT-BCC, Bus Guide to "New Services": - Aspley - Elizabeth St & Zillmere - Nth Quay, 12pp, VGC. - Bardon to Stafford & Enoggera to Chermerside, eff: 2-Dec-68, 12pp, VGC.	\$7-15
PTT - PERTH - TRAM	157	WA Govt Tramways, Trolley Buses, Motor Buses and State Ferries, PTT, eff 16-Apr-44, covering Trams, Buses and Ferries, Pocket size, 100pp, VGC.	\$40-60
MAP - VICTORIA - TRAM	158	SECV (Ballarat Tramways) Map, As displayed on Trams for Public Information, map of all routes, directions & fares, eff Nov-55 (drawn 27-10-55). 8 folds, some minor marks & tears, VGC.	\$40-75
MAP - VICTORIA - TRAM	159	SECV (Ballarat Tramways) List of Streets, Loops, Timing Points, Stops, Sections & Fares, Issue S.232, undated but likely 1960's issue, single sheet, some wear & fold marks, VGC.	\$30-50
PTT - SYDNEY - BUS	160	UTA-NSW Bus PTT: - Route 255 (Willoughby - Crows Nest - Balmoral), 257 (Chatswood - Balmoral), 271 & 272 (Willoughby - Wynyard), 273 & 274 (Chatswood - Willoughby - Wynyard), eff 6-Jul-80, 16pp, VGC.- Route 285-86 (Wynyard to Denistone East), 287 (Wynyard to Top Ryde), 288-90 (Wynyard to Epping Stn), eff 24-May-81, 16pp, VGC. - Route 263 (Gresham St City - Cammeray - Crows Nest - Wollstonecraft Stn), eff Sep-80, 8pp, VGC.	\$5-10
PTT - SYDNEY - BUS	161	DORT&T NSW Bus PTT: Route 304 (Elizabeth Bay - Central Railway via Kings Cross and Taylor Square), Route 326 (Paddington - Central Railway via Five Ways & Taylor Square), Eff 4-Sep-49, 6pp, VGC.	\$20-35

Category	Lot	Description	Est.
PTT - SYDNEY - BUS	162	DORT&T NSW Bus PTT: - Route 369 (Town Hall - Kings Cross - Darlington Point - Edgecliff), eff 27-Aug-50, 4pp, VGC.- Route 318 (Rockdale - Brighton LeSands - Ramsgate), 25-Nov-51, 12pp, VGC.	\$20-35
PTT - SYDNEY - BUS	163	DORT&T NSW Bus PTT: Route 490 (Drummoyne - York St, City), Route 491 (Drummoyne - Chiswick), eff 26-Nov-50, 18pp, VGC.	\$20-35
PTT - SYDNEY - BUS	164	DORT&T NSW Bus PTT: - Route 402-403 (Strathfield Stn to Lidcombe Stn), eff 13-Aug-50, 12pp, VGC. - Route 471 (Bexley North - Rockdale Stn), Route 472 (Rodd Point to Bexley North Stn), eff 26-Feb-50, 12pp, VGC.	\$20-35
PTT - SYDNEY - BUS	165	DORT&T NSW Bus PTT: Route 306 (Dover Heights - Dover Rd), Route 322 (Bondi Beach - Double Bay), Route 325 (Watsons Bay - Vaucluse - Martin Place), Route 327 (Watsons Bay to Central Railway), Route 328 (Watsons Bay - Martin Place), Eff 19-Sept-48, 24pp, VGC.	\$20-35
PTT - SYDNEY - BUS	166	DORT&T NSW Bus PTT: Route 365 (Bondi Beach to Central Railway), eff 31-Jul-49, 8pp, VGC.	\$20-35
PTT - SYDNEY - BUS	167	PTC-NSW Guide to Industrial (Bus) Services, eff Aug-1978, 20pp, VGC.	\$7-15
PTT - SYDNEY - BUS	168	Woronora Bus Service, Sutherland Services, 1p leaflet, undated but stamped 8-Dec-81 by previous owner, VGC.	\$2-5
PTT - SYDNEY - BUS	169	Woronora Bus Service, Sutherland Services, 1p leaflet, undated but stamped 6-Oct-75 by previous owner, VGC.	\$2-5
PTT - SYDNEY - BUS	170	Pittwater Bus Lines, Avalon area bus services, eff 1-Jun-79, A4 card TT, folded to 3pp, VGC.	\$2-5
PTT - SYDNEY - BUS	171	Pittwater Bus Lines, Avalon area bus services, eff 1-Jul-70, A4 card TT, folded to 3pp, VGC.	\$2-5
PTT - SYDNEY - BUS	172	UTA-NSW, Various Sydney District Bus PTT's (16 booklets), eff 1986-88, All EC.	\$5-10
PTT - SYDNEY - BUS	173	UTA-NSW & Newcastle Buses, Various Newcastle PTT's and Map/Guide - 8 PTT's eff 1987 & 1 Regional Guide eff 2002, all EC.	\$5-10
PTT - SYDNEY - BUS	174	PTC-NSW Bus PTT, Various Sydney area TT's, 14 TT booklets, eff 1976-77, all EC.	\$5-10
PTT - SYDNEY - BUS	175	UTA-NSW, Various Sydney Inner & Outer Suburban Bus PTT's (16 booklets), eff 1980-82, All EC.	\$5-10
PTT - SYDNEY - BUS	176	UTA-NSW, Various Sydney Metro Suburban Bus PTT's (9 booklets), eff 1981-83, All EC.	\$5-10
PTT - SYDNEY - BUS	177	Sydney Suburban Bus PTT, North & Western Bus Lines: - Route 228 Ryde to Eastwood Stn, eff 15-Nov-78, 1p, VGC. - Route 205, West Ryde, eff 25-Jun-75, 1pp, VGC - Route 205, West Ryde, eff 8-Mar-82, 1pp, VGC	\$5-10
PTT - SYDNEY - BUS	178	Sydney Suburban Bus PTT's: - Marrickville Bus Line, Sydenham to Dulwich Hill, undated approx late 70's, 1p, VGC. - McVicars Bus Line, East Hills to Roselands, eff 11-May-70, 1p, VGC.	\$5-10
PTT - SYDNEY - BUS	179	Sydney Suburban Bus PTT's: - Bankstown - Parramatta Bus Lines, Bankstown - Parramatta Route, eff 18 Feb-80, 4pp wet PC, GC. - Bankstown - Parramatta Bus Lines, Bankstown - Parramatta Route, undated, but stamped 30-Sep-81 by previous owner, 1pp printed, GC.	\$5-10
PTT - SYDNEY - BUS	180	Sydney Suburban Bus PTT's, Deane's Coaches: - Route 221 Lindfield Stn - West Lindfield & West Killara (& Gordon) eff Jun-78, 1pp, VGC. - Route 226, Turrumurra - Wahroonga Stn & Route 225/160 Turrumurra - Warrawee/Sanitarium/Warrawee Valley, eff Oct-78. 1pp DS -Route 223 Turrumurra to Bobbin Head & Route 63 Pymble to Murdoch St, eff Nov-78, 1p, VGC.	\$5-10
PTT - SYDNEY - BUS	181	Sydney Suburban Bus PTT, North & Western Bus Lines, Route 234 Gladesville to Woolwich, eff 26-Sep-78, 1p, VGC.	\$5-10
PTT - SYDNEY - BUS	182	DORT&T Bus PTT: - Winter Sunday Bus TT Manly & Warringah Districts (excl routes 150 & 158), eff 12-Jun-49, 4pp, VGC. - Ext of Journeys, Route 202 (Wynyard - Northbridge), Route 203 (Wynyard to Castlecraig) and Route 207 (Wynyard - East Lindfield), eff 26-Apr-53, 8pp, VGC. - Route 150 (Wynyard - Palm Beach), Route 151 (Wynyard - Church Point), Route 158 (Wynyard - Taylors Point), Route 159 (Wynyard to Church Point via Mona Vale), eff 8-Mar-53, 8pp, VGC.	\$20-35
PTT - SYDNEY - BUS	183	DORT&T Bus PTT: - Route 333 (South Head Cemetery - Central Railway, eff 11-Jan-54, 8pp, VGC. - Route 290 Epping Stn - Wynyard, eff 4-Feb-51, 10pp, VGC.	\$15-30
PTT - SYDNEY - BUS	184	DOGT-NSW, Bus TT: - Route 409, Hurlstone Park Stn - Rookwood Cemetery, eff 15-Feb-54, 16pp, VGC.	\$15-30
PTT - SYDNEY - BUS	185	DORT&T Bus PTT: - Route 458, Burwood Stn - Repatriation General Hospital - Concord & Route 459, Ryde to York St, City, 40pp, VGC.	\$15-30
PTT - SYDNEY - BUS	186	DOGT NSW, Trolley Bus PTT, Rockdale to Dolls Pt, eff 28-Oct-58, 20pp, VGC.	\$15-30

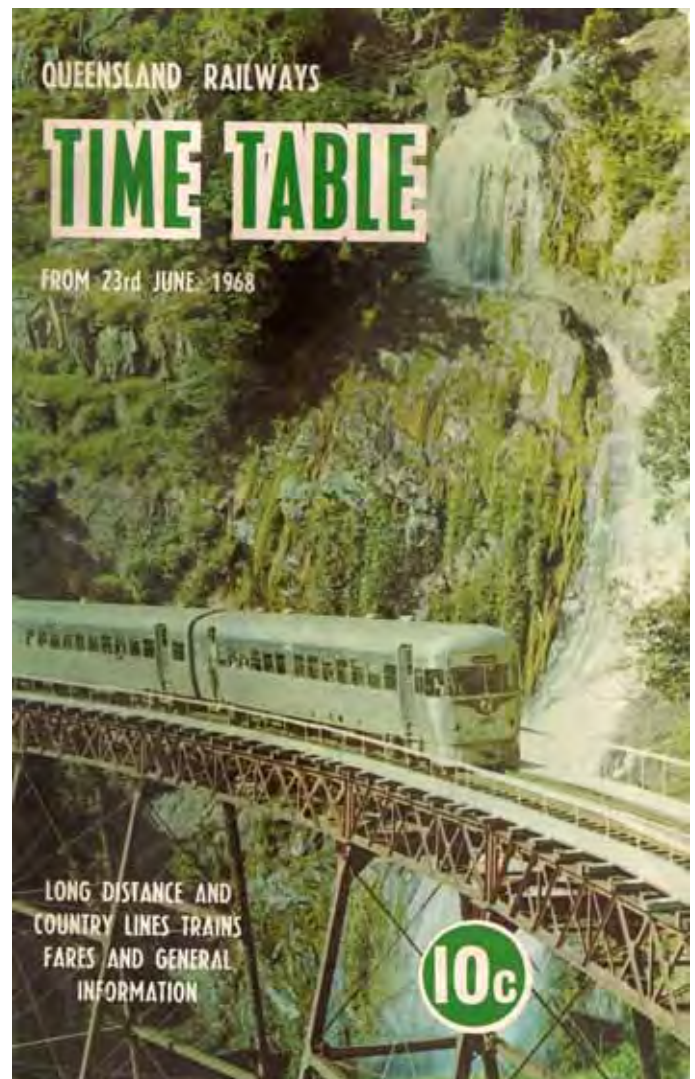
Category	Lot	Description	Est.
PTT - NSW URBAN - BUS	187	Blues Bus Services PTT, Katoomba Falls and Golf Links, Undated (late 50's/early 60's, 4pp, card, folded, VGC.	\$5-10
PTT - NEWCASTLE - BUS	188	DORT&T NSW Bus PTT: - Route 101-102 (Newcastle - Tighes's Hill - Waratah Hospital), Route 104 (Newcastle - Mayfield), 15-Feb-48, 16pp, VGC.- For Conveyance of Miners to John Darling, Burwood, Lambton B and Belmont Collieries, eff 25-Feb-46, 8pp, VGC.	\$15-30
PTT - NEWCASTLE - BUS	189	DORT&T NSW Bus PTT: Route 101 (Mayfield), 102 (Waratah - Lambton), 104 (Mayfield), 105 (Mayfield West), Eff 17-Apr-50, 36pp, VGC.	\$15-30
PTT - NEWCASTLE - BUS	190	DORT&T NSW Bus PTT: Route 203, Newcastle - Adamstown via Hamilton South), Eff 1-Sep-47, 8pp, VGC.	\$15-30
PTT - NEWCASTLE - BUS	191	DORT&T NSW Bus PTT: Route 323 (Newcastle - Broadmeadow - Swansea), Route 523 (Newcastle - Swansea - Catherine Hill Bay, eff 25-Feb-46, 30pp, VGC.	\$15-30
PTT - NEWCASTLE - BUS	192	DORT&T NSW Bus PTT: Route 324 (Newcastle - Speer's Point), Route 332 (Newcastle - Speer's Point), eff 25-Feb-46, 30pp, VGC.	\$15-30
PTT - NEWCASTLE - BUS	193	UTA-Newcastle Bus PTT, Route 101 & 104, Newcastle to Mayfield, eff Nov-80, 3pp, folded, VGC.	\$2-10
PTT - NZ -BUS	194	NZR ROAD SERVICES, Christchurch-Dunedin, 13-9-1954, 170x245 mm sheet. S = FC.	\$2-7
PTT - NZ -BUS	195	Christchurch Transport Board: Bus PTT: - Templeton & Sandbridge, Lge sheet TT, folded, eff 3-Oct-88, VGC. - Hornsby & Yaldhurst Rd, Lge sheet TT, folded, eff 3-Oct-88, VGC. - Papanui, Lge sheet TT, folded, eff 3-Oct-88, VGC. - Sumner, Mt Pleasant, Garlands Rd, Maces Rd, Lge sheet TT, folded, eff 3-Oct-88, VGC. - Huntsbury & St Martins, Princes Margaret Hosp, Bowenvale, Maces Rd, Lge sheet TT, folded, eff 3-Oct-88, VGC.	\$2-10
PTT - UK - BUS	196	Eastern National PTT, eff 27-May-73, 336pp (incl. map), VGC.	\$2-10
PTT - UK - BUS	197	Midland General Bus, Coach & Rail, PTT, eff 9-Apr-72, 220pp (Incl. map), VGC.	\$2-10
WTT - ADELAIDE - BUS	198	MTT-ADELAIDE BUS WTT - Grange, Henley, Locksley's, Kensington and Kensington Gardens, Mondays to Fridays, Eff 5-Apr-65, 22pp, VGC. - Grange, Henley, Locksley's, Kensington & Kensington Gardens, Saturdays, eff 9-Jan-65, 14pp, VGC. - Linden Park, Erindale, Beaumont, Burnside, Port Adelaide, Semaphore - Largs, Weekdays, eff 5-Feb-68, 16pp, VGC.	\$20-35
WTT - ADELAIDE - BUS	199	MTT-ADELAIDE BUS WTT - St. Peters - Kingswood, Mondays to Fridays, Eff 27-Nov-67, 6pp, VGC. - St Peters - Kingswood, Weekdays, eff 27-May-68, 12pp, VGC. - St. Peters - Kingswood, Weekdays, eff 27-May-65, 12pp, VGC.	\$20-35
WTT - ADELAIDE - BUS	200	MTT-ADELAIDE BUS WTT - St. Peters - Kingswood, Mondays to Fridays, Eff 17-Jan-68, 12pp, VGC. - St Peters - Kingswood, Weekdays, eff 10-Oct-66, 12pp, VGC. - St. Peters - Kingswood, Sundays, Eff 37-Nov-66, 4pp, VGC.	\$20-35
WTT - ADELAIDE - BUS	201	MTT-ADELAIDE BUS WTT - Gepps Cross, Enfield, Clarence Park to Colonel Light Gardens , Saturdays, Eff 14-Dec-57, 20pp, VGC. - Gepps Cross, Enfield, Clarence Park to Colonel Light Gardens, Sundays, eff 8-Dec-57, 8pp, VGC.	\$20-35
WTT - ADELAIDE - BUS	202	MTT-ADELAIDE BUS WTT - Magill, Tranmere, Hilton to Richmond, Saturdays, Eff 17-Nov-56, 12pp, VGC. - Magill, Tranmere, Hilton to Richmond, Weekdays, eff 18-Jun-56, 12pp, VGC. - Magill, Tranmere, Hilton to Richmond, Sundays, eff 18-Mar-56, 5pp, VGC.	\$20-35
WTT - ADELAIDE - BUS	203	STA-ADELAIDE BUS WTT: Marsden (Rte 291), Hillcrest Hospital (Rte 292), St Marys (Rte 296) and Enfield to Hillcrest Hospital (Rte 392), Saturdays, eff 28-Jul-90, 12pp, VGC.	\$20-35
WTT - ADELAIDE - BUS	204	MTT-ADELAIDE BUS WTT - St Peters to Kingswood, Weekdays, Eff 03-Feb-64, 12pp, VGC. - St Peters to Kingswood, Weekdays, Eff 21-Dec-64, 12pp, VGC. - St Peters to Kingswood, Weekdays, Eff 18-Oct-65, 12pp, VGC.	\$20-35
WTT - ADELAIDE - BUS	205	MTT-ADELAIDE BUS WTT - City (St James Place) to St Peters, Weekdays, Eff 21-Jul-58, 8pp, VGC. - St Peters to Kingswood, Weekdays, eff 19-Nov-62, 12pp, VGC. - St Peters to Kingswood, Weekdays, eff 4-Nov-63, 12pp, VGC.	\$20-35
WTT - ADELAIDE - BUS	206	MTT-ADELAIDE BUS WTT - St Peters, Paradise, Newton, Springfield, Kingswood, Weekdays, Eff 31-Jul-72, 13pp, VGC. - St Peters, Paradise, Newton, Springfield, Kingswood, Christmas Day & Good Friday, Eff 25-Dec-72, 8pp, VGC.	\$20-35

Category	Lot	Description	Est.
		- St Peters, Paradise, Newton, Springfield, Kingswood, Public Holidays, Eff 28-Jan-74, 10pp, VGC.	
WTT - ADELAIDE - BUS	207	MTT-ADELAIDE BUS WTT - St Peters, Paradise, Newton, Springfield, Kingswood, Weekdays, Eff 27-Oct-69, 16pp, VGC. - St Peters, Paradise, Newton, Springfield, Kingswood, Saturdays, Eff 30-Jan-71, 12pp, VGC. - St Peters, Paradise, Newton, Springfield, Kingswood, Saturdays, Eff 26-Oct-69, 04pp, VGC.	\$20-35
WTT - ADELAIDE - BUS	208	MTT-ADELAIDE BUS WTT - Paradise, Payneham, Fullarton and Springfield, Weekdays, Eff 18-Mar-56, 07pp, VGC. - Paradise, Payneham, Fullarton and Springfield, Weekdays, Eff 24-Jun-57, 12pp, VGC. - Paradise, Payneham, Fullarton and Springfield, Weekdays, Eff 18-Mar-56, 07pp, VGC. - Paradise, Payneham, Fullarton and Springfield, Weekdays, Eff 09-Dec-57, 12pp, PC , VGC.	\$20-35
WTT - ADELAIDE - BUS	209	MTT-ADELAIDE BUS WTT - Paradise, Payneham, Fullarton and Springfield, Weekdays, Eff 23-Nov-53, 6pp, VGC. - Paradise, Payneham, Fullarton and Springfield, Weekdays, Eff 01-Aug-54, 07pp, VGC. - Paradise, Payneham, Fullarton and Springfield, Weekdays, Eff 15-Mar-54, 6pp, VGC.	\$20-35
WTT - ADELAIDE - BUS	210	MTT-ADELAIDE BUS WTT- City (Victoria Square) to St Peters, Weekdays, Eff 08-Dec-57, 3pp, VGC.- City (Victoria Square) to St Peters, Saturdays, Eff 14-Dec-57, 3pp, VGC.- St Peters to Kingswood, Saturdays, Eff 27-Nov-54, 12pp, VGC.	\$20-35
WTT - ADELAIDE - BUS	211	MTT-ADELAIDE BUS WTT - City (Victoria Square) to St Peters, Weekdays, Eff 29-Apr-57, 4pp, VGC. - City (Victoria Square) to St Peters, Saturdays, Eff 04-May-57, 3pp, VGC. - St Peters to Kingswood, Saturdays, Eff 24-Oct-53, 12pp, VGC.	\$20-35
WTT - ADELAIDE - BUS	212	MTT-ADELAIDE BUS WTT - City (Victoria Square) to St Peters, Weekdays, Eff 08-Dec-57, 3pp, VGC. - City (Victoria Square) to St Peters, Saturdays, Eff 14-Dec-57, 3pp, VGC. - St Peters to Kingswood, Sundays, Eff 18-Oct-53, 04pp, VGC.	\$20-35
WTT - ADELAIDE - BUS	213	MTT-ADELAIDE BUS WTT - City (Victoria Square) to St Peters, Weekdays, Eff 08-Dec-57, 3pp, VGC. - City (Victoria Square) to St Peters, Saturdays, Eff 14-Dec-57, 3pp, VGC. - St Peters to Kingswood, Sundays, Eff 28-Feb-54, 04pp, VGC.	\$20-35
WTT - ADELAIDE - BUS	214	MTT-ADELAIDE BUS WTT - City (Victoria Square) to St Peters, Weekdays, Eff 05-Jun-56, 11pp, VGC. - City (Victoria Square) to St Peters, Sundays, Eff 28-Feb-53, 4pp, VGC. - St Peters to Kingswood, Sundays, Eff 28-Feb-53, 4pp, VGC.	\$20-35
WTT - ADELAIDE - BUS	215	MTT-ADELAIDE BUS WTT - Paradise, Payneham, Fullarton and Springfield, Sundays, Eff 12-Nov-54, 8pp, VGC. - Paradise, Payneham, Fullarton and Springfield, Sundays, Eff 21-Jul-57, 7pp, VGC. - Paradise, Payneham, Fullarton and Springfield, Sundays, Eff 13-May-56, 7pp, VGC. - Paradise, Payneham, Fullarton and Springfield, Sundays, Eff 10-Jun-56, 8pp, VGC. - Paradise, Payneham, Fullarton and Springfield, Sundays, Eff 29-Jan-56, 8pp, VGC.	\$20-35
GUIDE - NZ - TRANSPORT	216	"Auckland Regional Transport Guide", 1984 ed., 98pp incl. maps and information. EC.	\$2-5
GUIDE - UK - RAIL	217	GWR Publicity Brochure Cheddar, Wells & Glastonbury, folded, undated 1950's print, GC.	\$2-5
GUIDES - USA - RAIL & BUS	218	California by RAIL, Bus & Ferry, includes the California Transit Guide, 1995ed, 224pp, VGC.	\$2-5
GUIDES - USA - RAIL & BUS	219	The Official Bus Guide (USA, Canada & Mexico), Aug-89 ed., 665pp, VGC.	\$2-5
GUIDES - USA - RAIL & BUS	220	The Official Bus Guide (USA, Canada & Mexico), Jan-95 ed., 312pp, VGC.	\$2-5
GUIDES - USA - RAIL & BUS	221	Thomas Cook North American Rail & Bus Guide, Summer 1994 ed., 144pp, EC.	\$2-5
GUIDE - USA - RAIL	222	UP "Western Wonderlands", publicity of services & RAIL facilities, Feb-53 print, folded, VGC.	\$2-5
MAP - AUSTRALIA - AIR	223	ANSETT ANA ROUTE MAPS, circa early 1960s?, very detailed tri-coloured maps, 8pp folds downs to 24pp of 95x218 mm. V. minor moth-eating = VGC.	\$2-5
MAP - AUSTRALIA - AIR	224	TAA Route Maps & Flight Information Beautiful colour guide to TAA - state by state, 170x270mm, 16pp, folded & stapled, EC.	\$2-5
MAP - SYDNEY - RAIL	225	Commissioner of Railways NSW, Railway Map, 1939 ed., pocket size, folded to 4 pp.	\$20-35
MAP - SYDNEY - GENERAL	226	DOGT - Official Guide to Sydney, Northern Subs, 1959, Fold out map, VGC. MTA Brisbane, Public Transport Pocket Map, Folded Map, Ed 2, 1982, VGC.	\$10-20

Category	Lot	Description	Est.
MAP - SYDNEY - GENERAL	227	Various Public Transport Maps of Sydney area: - Railway Map of Sydney Subn & City Underground Railway, 1939 ed., 4pp folded, GC. - DOGTNSW Official Guide to Bus Services, Sydney, 1959 ed., folded GC. - PTCNSW, Bus, Train & Ferry Servs, Sydney, undated 1970/1980's ed., GC. - DOGTNSW, Guide to Omnibus, Tramway, Trolley Bus & Ferry Services, Sydney 1954 ed., folded, VGC. - DOGTNSW, Guide to Bus, Tram, Trolley Bus & Ferry Services, Sydney 1956 ed., folded, VGC.	\$10-20
MAP - LONDON - BUS	228	London wide Bus Map, folded, v1, 1984, some moth eating, GC.	\$2-5
MAP - LONDON - GENERAL	229	London Transport COUNTRY AREA, No.1 1948, nth & sth maps as well as 8 town maps, 48pp folds down to 77x148mm. VGC.	\$7-15
MAP - LONDON - GENERAL	230	London Transport, GREEN LINE COACH MAP, No.1 1948, tr-coloured map on one side and two continuations & an inset on the other, 48pp folds down to 77x148mm. GC.	\$7-15
MAP - USA - RAIL	231	SANTA FE system & full US map, circa 1950s?, tri-colour map on one side & rail info. & photos on the other, folds down 32 x std. US pp. GC.	\$7-15
GUIDE - PACIFIC REGION - AIR	232	QANTAS Pacific Routes Flight Guide 50th anniv., published 11-69, 26pp, VGC.	\$7-15
BOOKS - NEW SOUTH WALES - OTHER	233	"Sydney By Public Transport" <i>Gregory's Publishing 1981</i> , 160pp, VGC.	\$7-15
BOOKS - UK - RAIL	234	History of Railways Magazine, Pt 1 & Pt 41, each 20pp. Great RAILS Magazine, Pt 1, 20pp,	\$7-15
PTT - FERRY - VICTORIA	235	Ferry PTT's: - Nepean & Hygeia, Sorrento, Portsea & Queenscliff, Card folded to pocket size, 1984ed, VGC.- J.J. Farnsworth & Nepean, Sorrento, Portsea & Queenscliff, Card folded to pocket size, 1989ed, VGC.	\$5-15

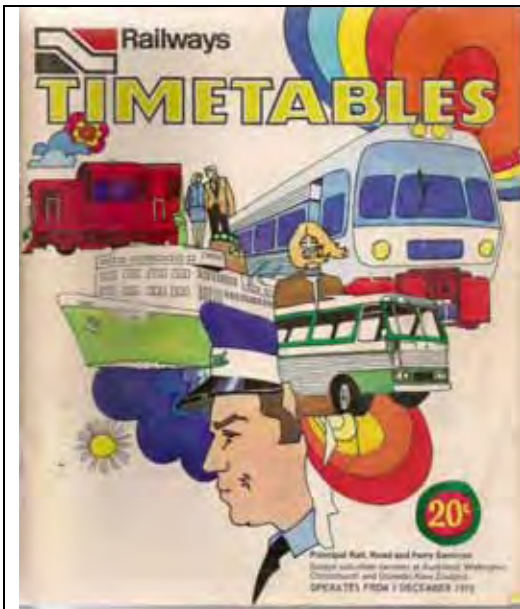


Lot 9

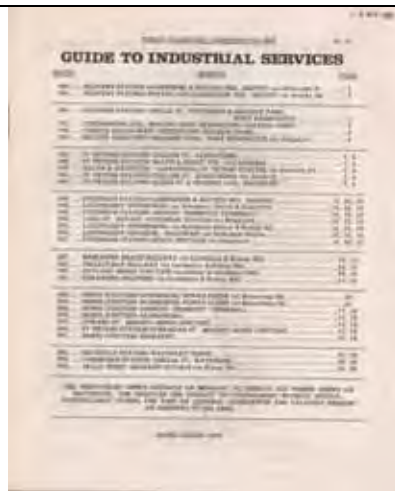


Lot 21





Lot 40



Lot 167



Lot 32



Lot 144



Lot 38



Lot 22



Lot 146



Lot 232



Lot 149



Lot 157